

English Roe Buck and Muntjac Package at Gowthorpe Manor

5 days | 4 nights | 4 hunting days | Roe Buck & 2 x Muntjac

From \$6,000 per hunter - All inclusive



English Roe Buck and Muntjac Package at Gowthorpe Manor

From \$6,000 (*all inclusive*)

Overview

Hunt English roe deer and muntjac on a private 1,000-acre Norfolk estate, just two hours from London. This is classic English countryside stalking - moving through arable fields at first light, working hedgerows and woodland edges, and taking close-range shots that test your fieldcraft.

You'll stay at Gowthorpe Manor, a 16th-century Elizabethan manor house at the heart of the hunting ground. The estate holds healthy populations of both roe and muntjac, with the variety of terrain - open fields, dense woodland, hedgerows, and field margins - offering a different challenge with each outing.

For the most exciting hunting, we recommend timing your trip to coincide with the roe rut in July and August. Territorial bucks respond aggressively to calling, with shots coming quickly and at close range - it's fast-paced, engaging, and unlike anything else in British deer stalking.

Mornings start early with a stalk at first light. After breakfast back at the Manor and time to relax, you'll head out again for an afternoon or evening hunt. All meals and drinks are included - a full English breakfast, lunch, and a three-course dinner each evening.

SEASON: Roe Bucks: 1st April - 31st October. Muntjac: All year round

HUNTING GROUND: [Gowthorpe Manor Estate](#) - 1,000 acres of mixed arable, woodland and hedge rows

NEAREST AIRPORT: London Stansted (90 minutes). London Heathrow and Gatwick (2.5 hours)

PRICES:

Hunter: 5 Days, 4 Nights, 4 Hunting Days

- 1 x Roe Buck + 2 x Muntjac \$6,000
- 2 x Roe Bucks + 4 Muntjac \$8,000

Observer: 5 Days, 4 Nights, 3 Sightseeing Or Relaxing Days

- Without Sightseeing: \$500
- With Sightseeing: \$1,000

Meet Your Outfitter: George

George is a passionate advocate for all things hunting, fishing and the outdoors. Raised at Gowthorpe Manor, he developed fieldcraft skills from an early age, and never lost the connection.

After graduating from Durham University, George worked as a management consultant in London for six years. However, he realized his true calling was to reconnect with nature. He made the decision to move to the Outer Hebrides in Scotland, where he became a professional deer hunter and fishing guide. This experience ignited his enthusiasm for guiding guests and creating unforgettable experiences that they would cherish for a lifetime.

He founded Griffin Sporting Club to offer visiting hunters the opportunity to experience the outstanding fieldsports available across the UK, all delivered with a thoughtful and traditional manner. George looks forward to sharing these remarkable experiences with you!



Accommodation & Hospitality

You'll stay at Gowthorpe Manor, a Grade II listed Elizabethan manor house dating from the 1520s, set in the heart of the estate. This is a proper English country house - oak beams, period furniture, a drawing room with a fireplace, and the kind of character that only five centuries of history can produce. The hallways are lined with sporting prints and trophies, and it feels exactly like the England you came here to experience.

Bedrooms are individually furnished with comfortable beds, and the manor has a freestanding roll-top bath for those who want to soak after a day in the field. Meals are taken in the dining room - expect a full English breakfast each morning, a relaxed lunch, and a locally sourced three-course dinner in the evening. House drinks are included throughout your stay.

Example Itinerary

Monday - Arrival Day

- Pick up from London Airport by a member of the Griffin Sporting team
- Arrival at Gowthorpe Manor
- Explore the surrounding ground, zero your rifle, and discuss the plan for the coming days with your stalker
- Three-course dinner at the Manor

Tuesday - Thursday - Hunting Days

- Up early for a first-light stalk
- Back to the Manor for a full English breakfast
- Observers head out on their day trip
- Relax, explore the grounds, or take lunch at the Manor
- Afternoon or evening hunt depending on conditions
- Three-course dinner - swap stories from the day

Friday - Departure Day

- Up early for a first-light stalk
- Traditional English breakfast
- Pack up and depart the lodge for London or the airport
- If time allows, a stop at a local attraction en route
- Drop off at London airport or in the City

Included

- 1 Roe Buck and 2 x Muntjac (depending on package):
- All transport, including airport Transfer (Inverness Airport)
- Accommodation (4 nights)
- Food & Drink, incl. (house) Alcohol
- Rifle Hire and Ammo
- Licensing

Not Included

- Flights
- Trophy preparation & export (see more information below)
- Gratuities for your stalker and lodge staff are customary but at your discretion

Trophy Exports

We handle the hard part. After your hunt, we'll prepare your trophy and hand-deliver it to our export partner, who has decades of experience shipping trophies to the US. They manage all the paperwork, USDA documentation, and customs clearance - your trophy arrives at your door, typically within 60 days of your hunt.

Roe deer and muntjac are non-CITES species, so no special permits are required on the US import side. You'll pay the export company directly for shipping and handling. We'll connect you with them before your trip so you know exactly what to expect.

What to bring

Don't worry if you don't have all of this - we can advise and help source kit before your trip.

Clothing Footwear

- Waterproof, breathable jacket (in muted / natural colors)
- Sturdy, waterproof hiking boots
- Warm mid-layers
- Stalking trousers (quiet fabric, neutral colors)
- Cap
- Comfortable clothes for dinners

Equipment for the Hill

- Binoculars (8x or 10x recommended)

Observer activities

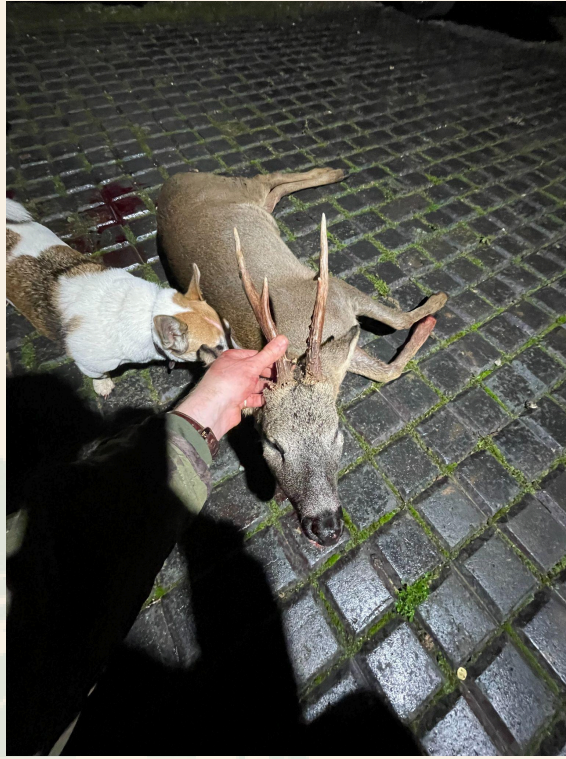
We'll arrange a local guide to take observers on day trips around Norfolk. There's no shortage of things to see:

- [The Norfolk Broads](#)
- [Whitlingham Country Park](#)
- [Norwich Cathedral & Riverside Walk](#)
- [Norwich Castle Museum & Gardens](#)
- [BeWILDerwood](#)
- [Blickling Estate](#)
- [Cromer & Overstrand Coast](#)
- [Spa](#)



THE BUCKS







THE MANOR





Ready to book your Roe Buck and Muntjac experience?

Get in touch to check availability and plan your trip. We're happy to answer any questions — no pressure, just an honest conversation about what to expect.

george@griffinsportingclub.com

Or

Call via WhatsApp +44 7951 436997

We typically respond within 24 hours. If you're calling from the US, WhatsApp is the easiest way to reach us across the time difference.